

Company Profile



PT. Ever Shine Tex



PT. Ever Shine Tex Tbk
A PUBLIC LISTED COMPANY

Table Of Content

1. Company Profile
2. Our Values
3. Vision & Mission
4. Company and Organization Structure
5. Facilities and Process
6. Products and Customer



Our Values



1. Speed In Everything We Do
 2. All For One and One For All
 3. Reputation Is Key To Our Success
 4. Drive: The Thirst To Constantly Improve Can Be Achieved If One Is Never Satisfied
-



Our Great Vision

Our Vision

To be recognized internationally as the best fully integrated synthetic textile company in Indonesia and a better know quality producer of special application products.



PT. Ever Shine Tex Tbk
A PUBLIC LISTED COMPANY

Our Great Mission

Our Mission

To increase shareholders' value through operational efficiency, management effectiveness and profitable business pursuits as well as to build a viable business that thrives in favorable economic conditions and survives under economic storms.

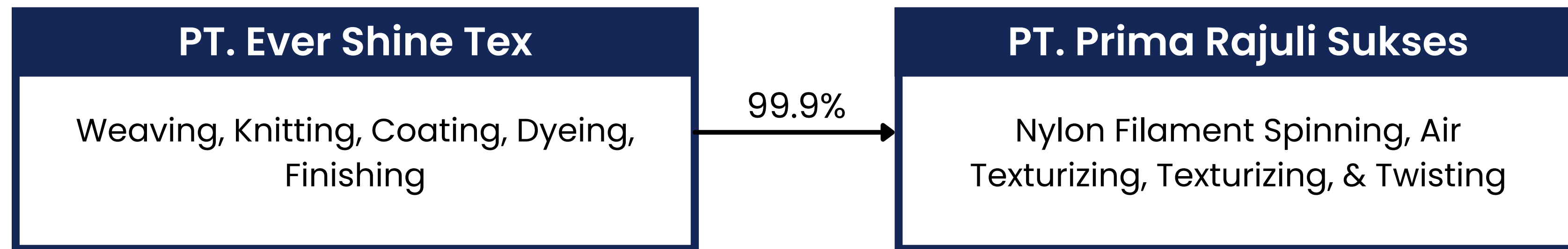




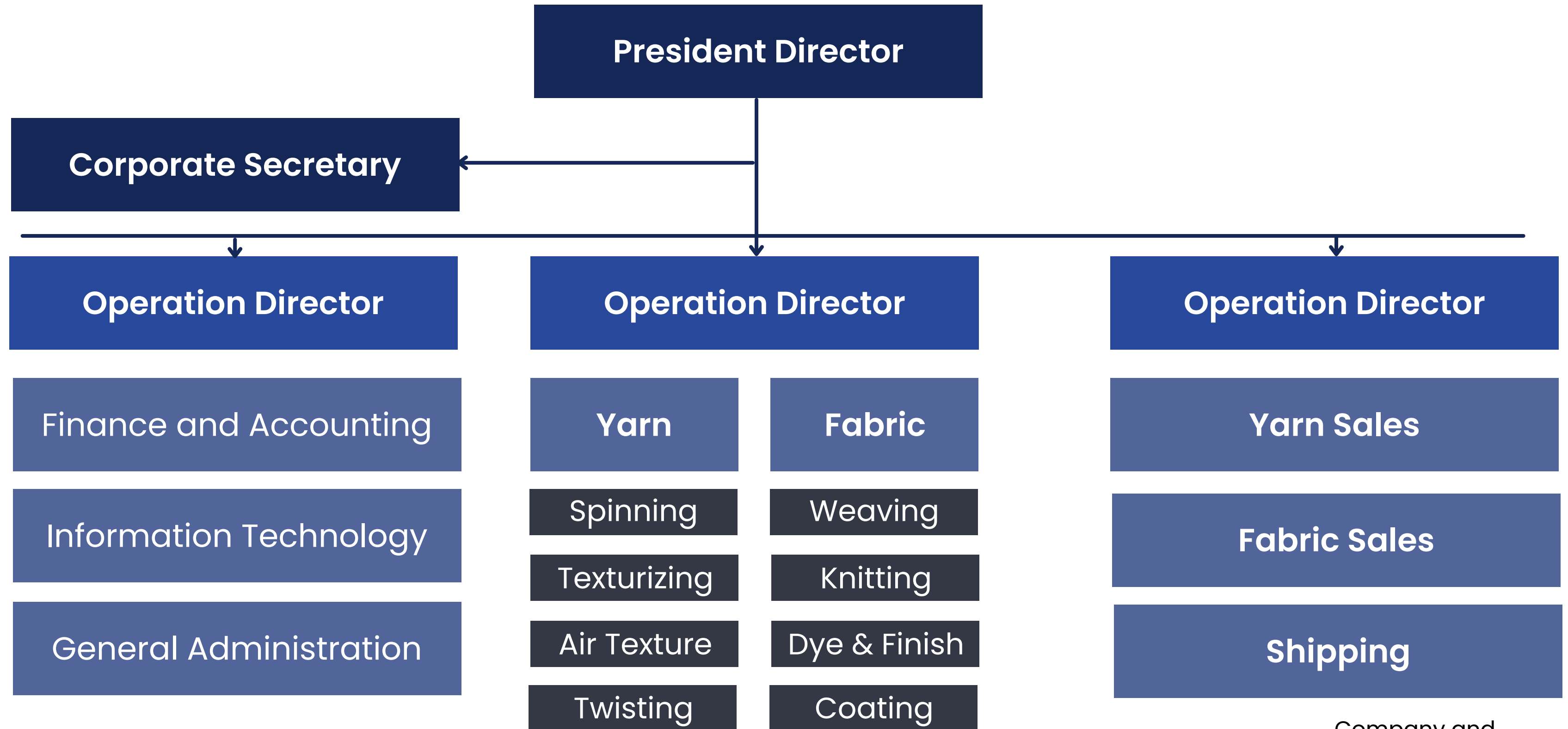
PT. Ever Shine Tex Tbk
A PUBLIC LISTED COMPANY

Company and Organization Structure

PT Ever Shine Tex owns 99.9% of its yarn subsidiary PT Prima Rajuli Sukses.



Company Structure





PT. Ever Shine Tex Tbk
A PUBLIC LISTED COMPANY

Facilities & Process

Brief description of the company and its facilities

Yarn Division

Location: Balaraja Timur, Tangerang

Land size: 10 Hectares

Induction year: 1997

Employees: ~400

Produces:

1. Nylon 6 Filament Yarn (NFY)
2. Nylon Partially Oriented Yarn (POY)
3. Nylon and Polyester Drawn Textured Yarn (DTY)
4. Nylon and Polyester Twist Yarn
5. Nylon and Polyester Air Textured Yarn (ATY)

Fabric Division

Location: Balaraja Timur, Tangerang

Land size: 10 Hectares

Induction year: 1974

Publicly Listed: 1992

Location merge with Yarn Division: 2017

Employees: ~700

Produces:

1. Polyester and Nylon Woven Fabrics
2. Polyester and Nylon non Spandex Knit Fabrics
3. Special Application Fabrics (Brush and Coated)



Annual yarn and fabric capacities in both divisions

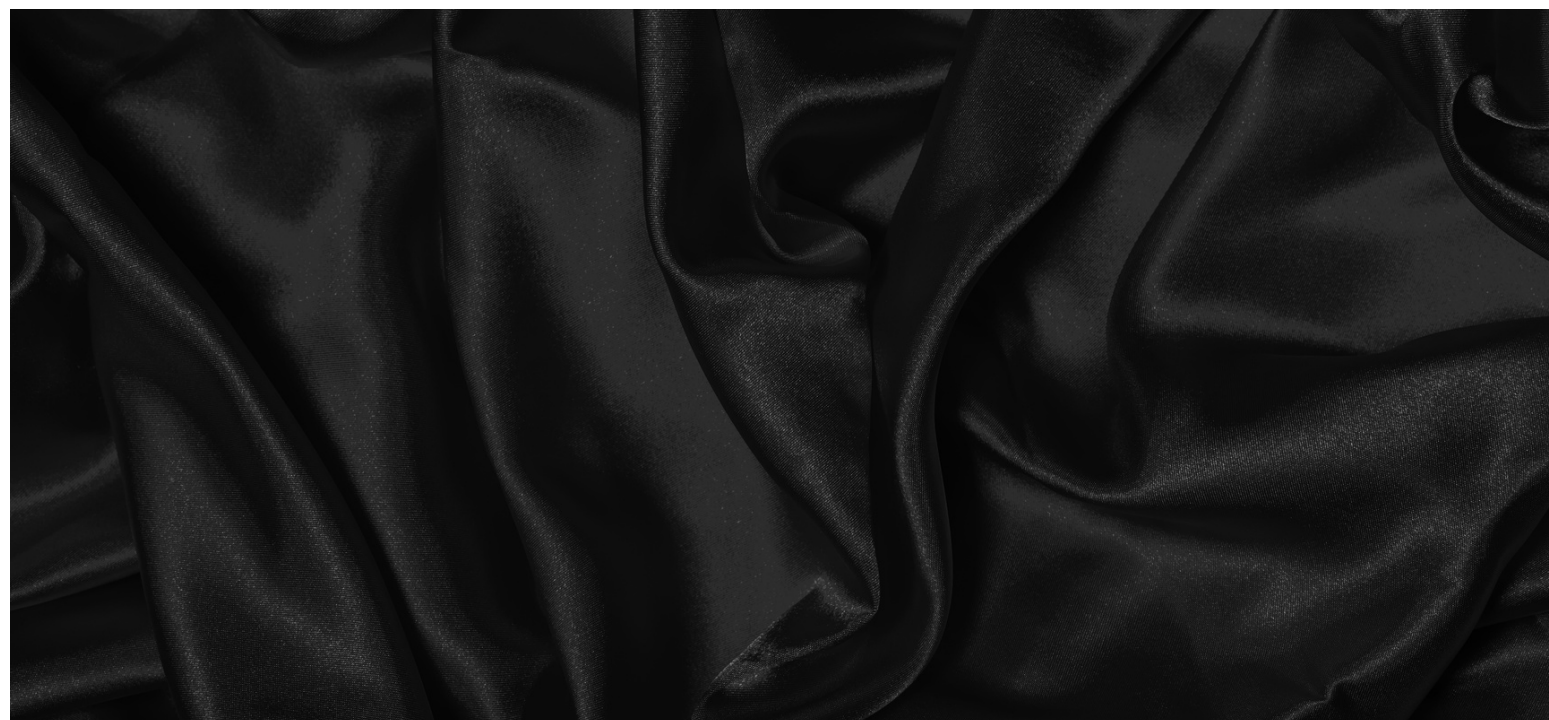
Yarn Divison

Nylon Filament Yarns (NFY)	10.800.000 kgs
Draw Textured Yarns (DTY)	7.500.000 kgs
Air Textured Yarns (ATY)	1.728.000 kgs
Twisted Yarns	3.000.000 kgs



Fabric Divison

Woven Fabrics	10.800.000 yds
Knitted Fabrics	1.800.000 kgs

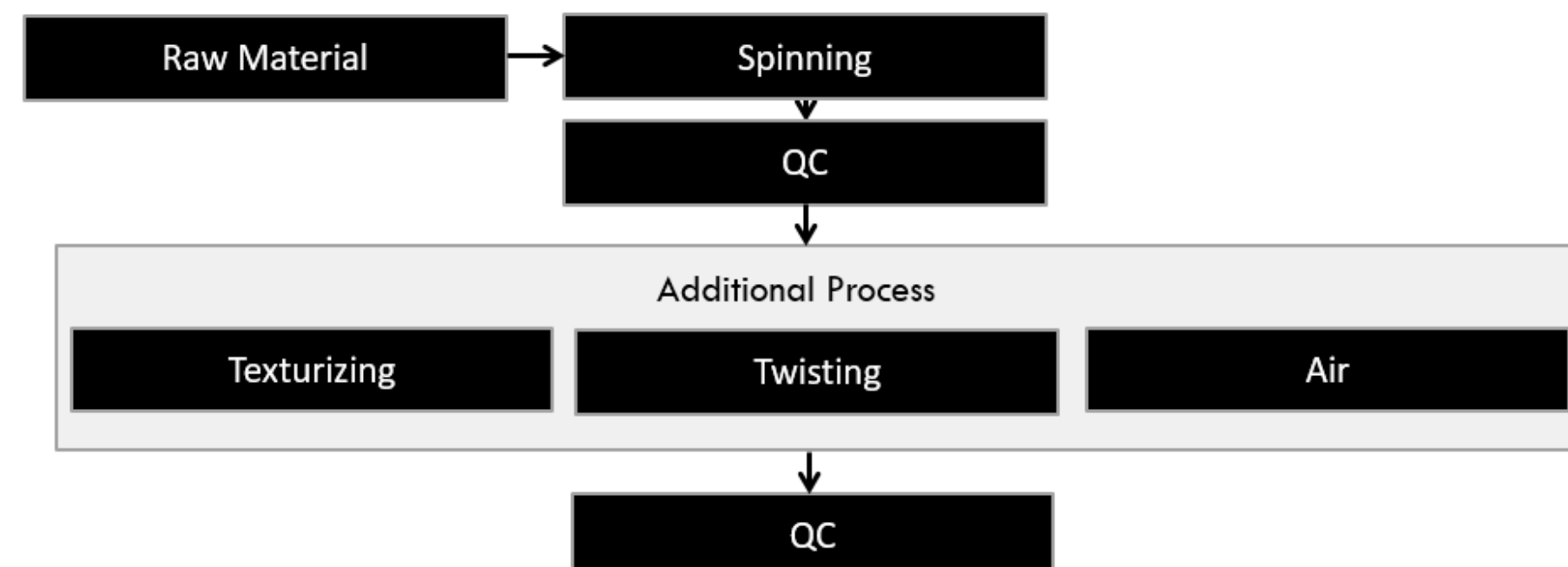


Facilities in Yarn Divison

Type	Units	Total
Nylon Spinning Line	10	10
Texturizing Machine	10	10
Air Texturizing Machine	3	3
Twisting Machine	22	22



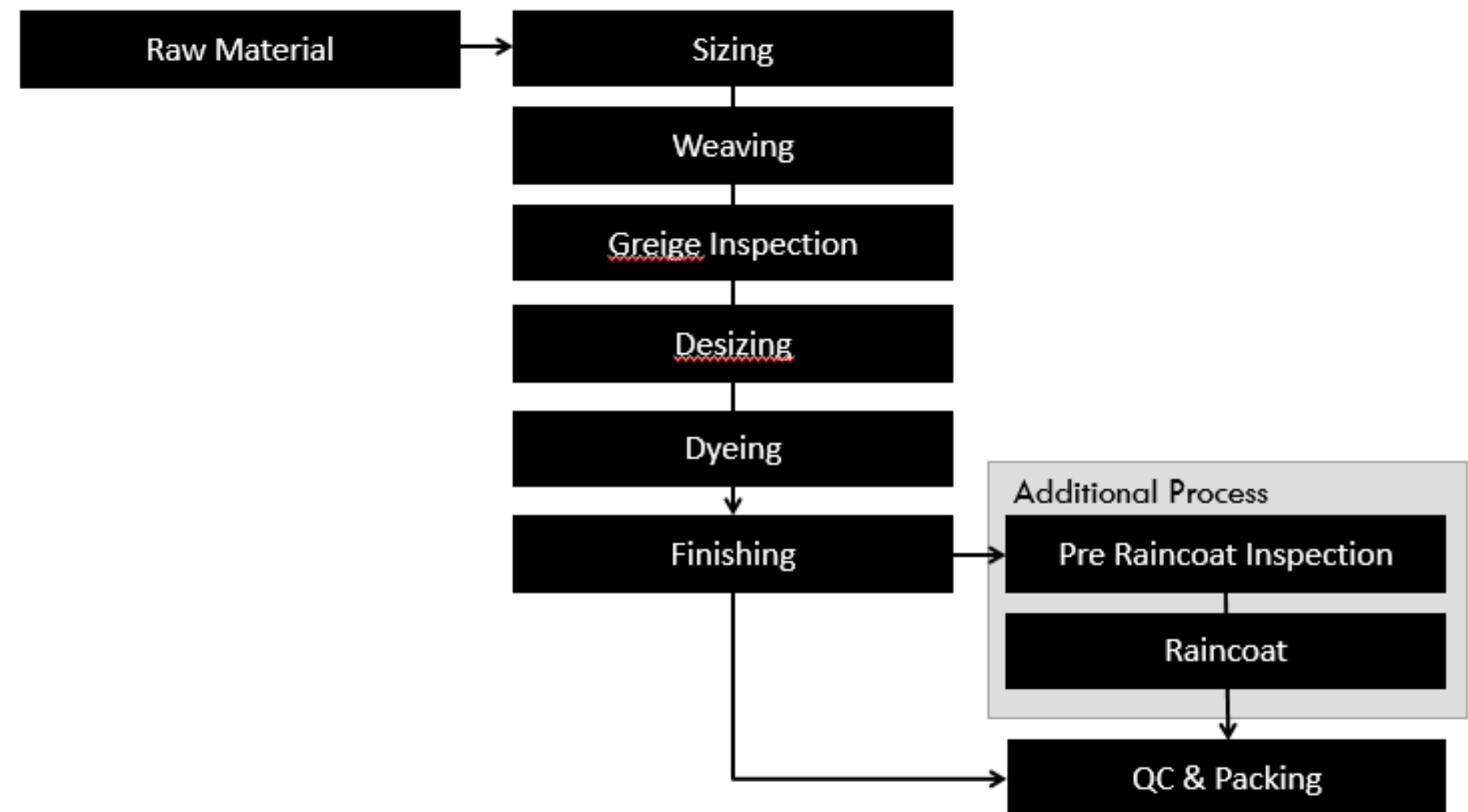
Standard Yarn Process



Facilities in Fabric Divison

Type	Units	Total
Tricot Knitting	24	24
Water Jetloom	264	401
Air Jetloom	137	401
Jet Dyeing	14	23
Beam Dyeing	5	23
Jigger Dyeing	4	23
Stenter	5	5
Brushing	2	2
Calender	2	2
Raincoat	2	2

Standard Woven Fabric Process





PT. Ever Shine Tex Tbk
A PUBLIC LISTED COMPANY

Certification For Compliance and Standards



Yarn

Fabric



PT. Ever Shine Tex Tbk
A PUBLIC LISTED COMPANY

Compliant with Environmental Standards



Raw Water Treatment Facility



Waste Water Treatment Facility



Products and Customer

Synonymous for the brands that are sold in the market

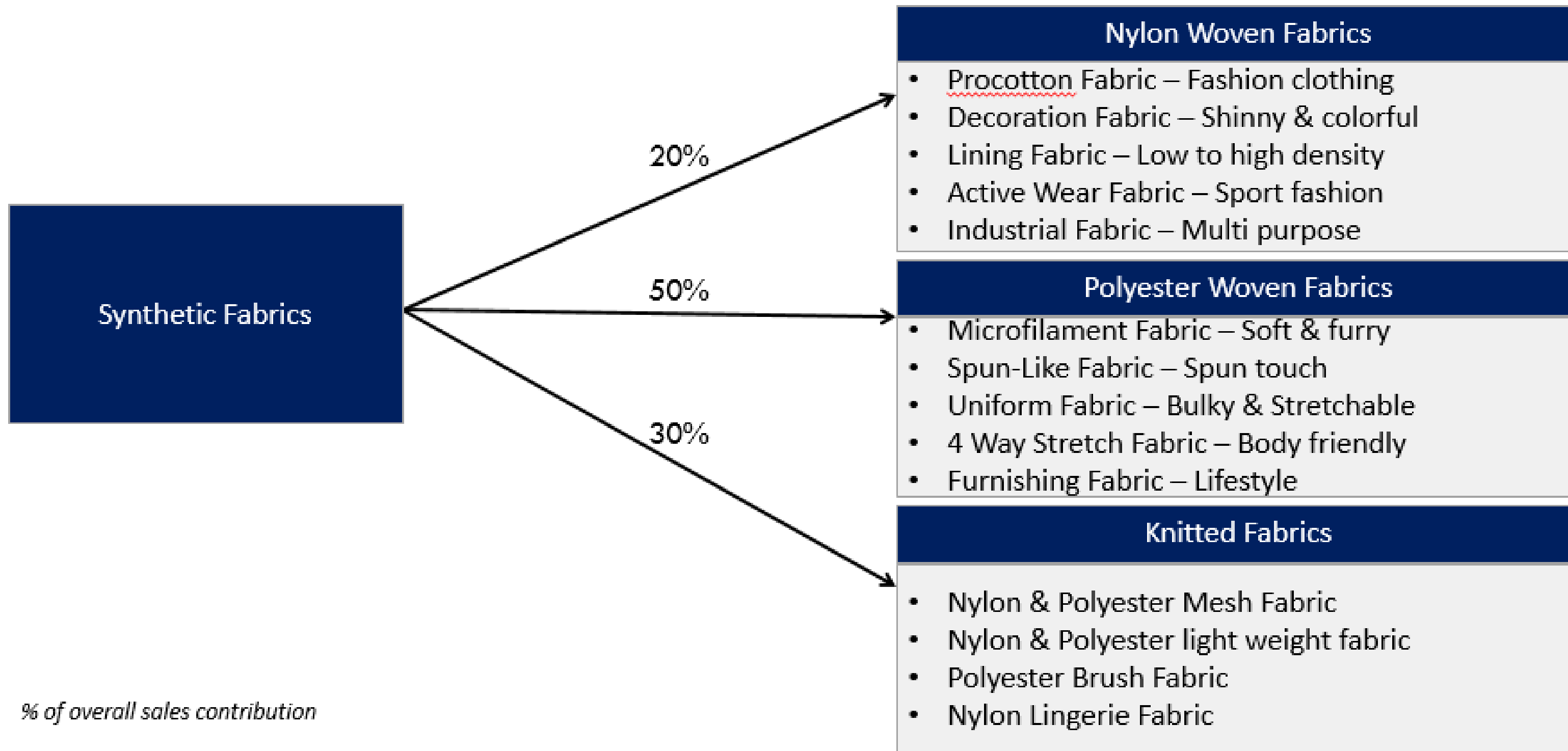
Yarn



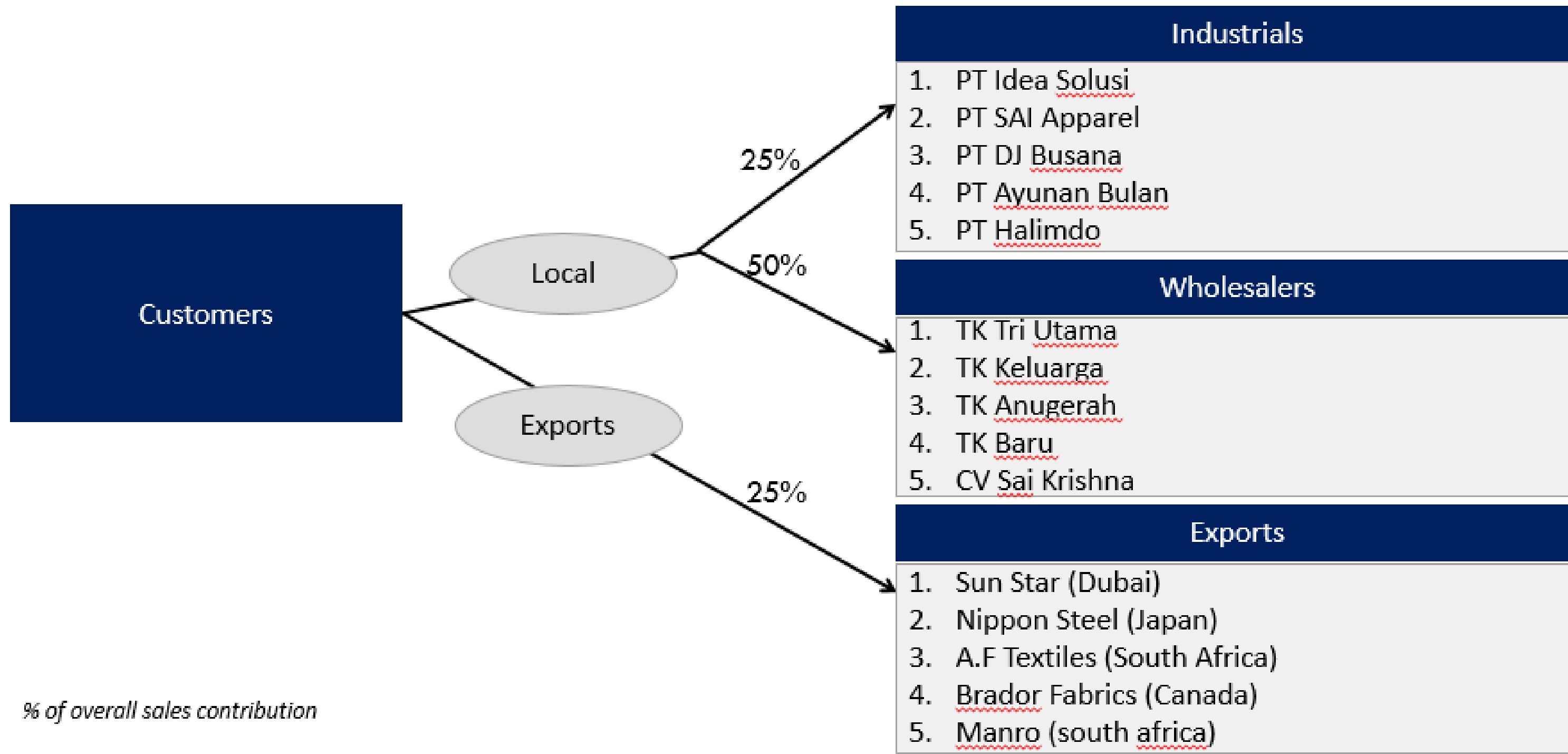
Fabric



Our Various Products in Offer



Ever Shine Sells Their Fabrics Both Locally and Export



Brands That We Support

Global Retail

MARKS &
SPENCER

 Columbia
Sportswear Company

H&M

ESPRIT

s.Oliver[®]

FILA

BOSS
HUGO BOSS

**UNI
QLO**

GU

Printstar
We are confident of Quality.





PT. Ever Shine Tex Tbk
A PUBLIC LISTED COMPANY

Products Catalogue



Local Retail & Online



ALISAN



3SECOND



Local Industrials



GOJEK



AHM
PT Astra Honda Motor



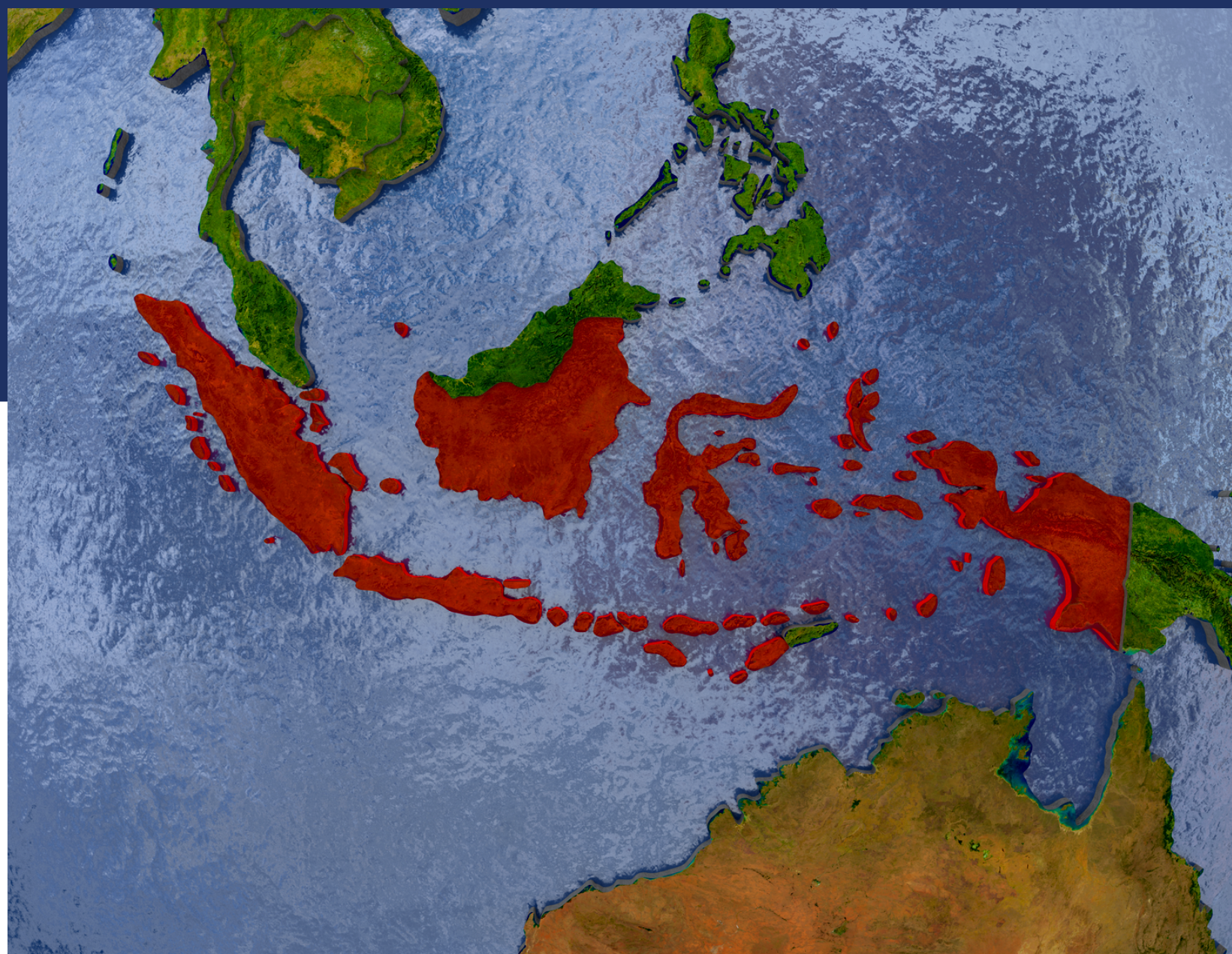
Grab



YAMAHA
Revs your Heart



TICKET TO THE MOON



Thank You

Contact Us:



Head Office
Jl. H Fachrudin No 16
Jakarta Pusat 10250
021 316 0238

Production Facility
Jl. Arya Jaya Santika
Tangerang 15720
021 599 1612



www.evershinetex.com



@evershinetex



@evershinetex